

NEW

ELKA Slide gate opener EST-FU

with frequency converter controller



Available as drive assembly for on-site gate posts

Developed by ELKA

The new slide gate openers EST-FU 1500 and EST-FU 3000 with high duty cycle and efficient hypoid bevel gearbox offer sufficient power in any situation and are designed for gates with an opening width of up to 30,000mm.

EST-FU 1500 / EST-FU 1500A

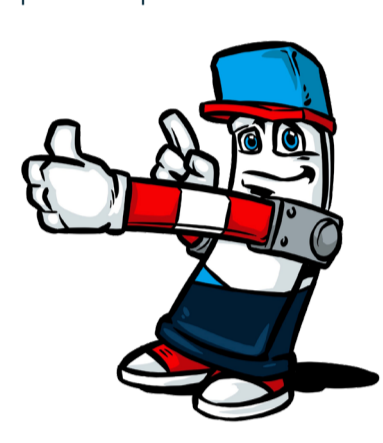
Max. gate leaf weight 1,500kg, max. gate running speed 22.2m/min.

EST-FU 3000 / EST-FU 3000A

Max. gate leaf weight 3,000kg, max. gate running speed 16.2m/min.

Special features

- ✓ **Boost Function:**
Higher rated power for a short time when the gate starts up
- ✓ **Power Factor Correction (PFC):**
Unrestricted operation even with low mains voltage from 200Vac upwards
- ✓ **Gate Position Control:**
The position of the gate is determined exactly via an absolute encoder - even after a power failure or emergency release (without re-teaching)
- ✓ **Quick Install:**
Min. and max. height of the toothed rack on the gate can be determined during installation over the entire gate length with the aid of limit indicators and the optimum position of the toothed wheel can be set



Comfortable

- ✓ Aluminium housing with plenty of space for additional fittings and integrated receptacle for safety contact profiles
- ✓ Improved monitoring through 4 separate contact profile evaluations (each for direction of movement OPEN and CLOSE of the main and secondary closing edges)

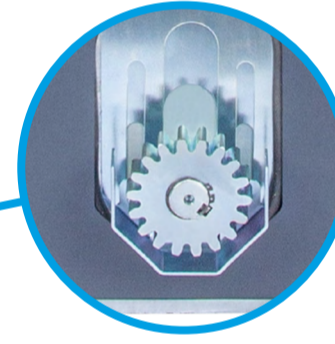


Locking via swivelling lever lock (optional on-site installation of profile half cylinder possible)



Professional

- ✓ Hypoid bevel gearbox with high efficiency
- ✓ High duty cycle
- ✓ Robust steel construction for long-lasting operation

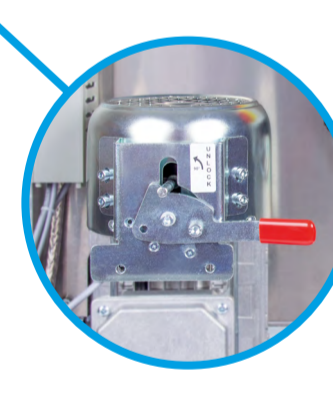


Available separately: Toothed wheel (Module 4 or Module 6)



Safety

- ✓ Failsafe inputs (performance level PLc) for evaluation of safety devices
- ✓ Connection options for type E safety devices (e.g. laser scanner)
- ✓ Photoelectric barrier connections with test function for forward space and rear space monitoring



Simple emergency release via lever on the motor

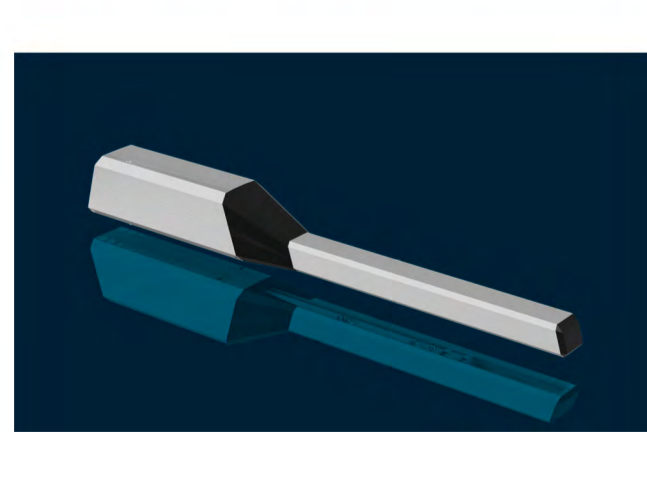
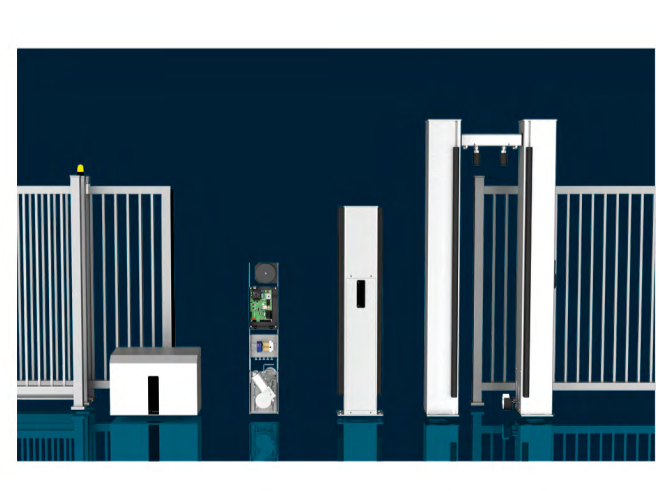
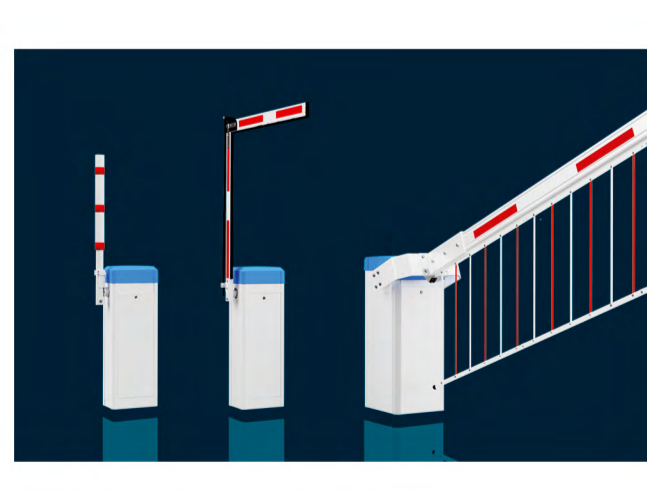


Simple operation via frequency converter controller

- ✓ Illuminated graphic display and plain text menu (4 languages)
- ✓ Monitoring of the inputs via display (e.g. display of resistance values of the 8k2 safety contact profiles, status changes, gate OPEN/CLOSED)
- ✓ Automatic teaching (using additional limit switches can simplify commissioning)

Have we sparked your interest?
Please don't hesitate to contact us - we will be happy to advise you!

Visit our Website



ELKA-Torantriebe GmbH u. Co. Betriebs KG, Dithmarscher Str. 9, 25832 Tönning

✉ info@elka.eu

🌐 www.elka.eu

☎ + 49 (0) 4861 - 9690 - 0

☎ + 49 (0) 4861 - 9690 - 90

Legal form: Kommanditgesellschaft, Amtsgericht Flensburg HRA 1279 HU, Persönlich haftende Gesellschafterin ELKA-Torantriebe Verwaltungs GmbH, Tönning, Amtsgericht Flensburg HRB 1135 HU

General manager: Torben Nehls-Eller, Elisabeth Christens